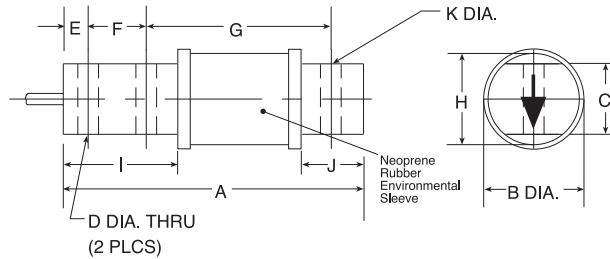
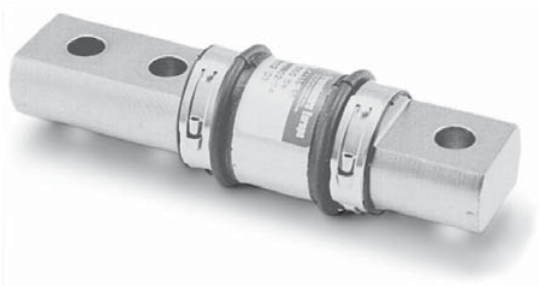


# 5102 Single-Ended Beam, Alloy Steel, IP67



Picture is a representation of actual product

RATED CAPACITY	DIMENSIONS											
	A	B	C	D	E	F	G	H	I	J	K	
<b>lb/inches</b>												
50-200	5.00	1.25	.75	.27	.38	.62	3.50	1.23	1.50	1.25	.39	
500-1000	5.38	1.25	.75	.41	.62	1.00	3.25	1.23	2.07	1.20	.41	
2500	5.38	1.25	.75	.41	.62	1.00	3.25	1.23	2.07	1.20	.53	
5000-10000	7.28	1.75	1.38	.66	.75	1.75	4.03	1.70	3.47	1.56	.78	
<b>kg/mm</b>												
22.7-90.7	127.0	31.7	19.1	6.9	9.7	15.7	88.9	31.2	38.1	31.8	9.9	
226.8-453.6	136.7	31.7	19.1	10.4	15.8	25.4	82.6	31.2	52.6	30.5	10.3	
1134.0	136.7	31.7	19.1	10.4	15.8	25.4	82.6	31.2	52.6	30.5	13.5	
2268.0-4535.9	184.9	44.4	34.9	16.8	19.1	44.5	102.4	43.2	88.1	39.6	19.8	

## SPECIFICATIONS:

<b>Full Scale Output:</b> 2.0 mV/V	<b>Deflection at Capacity:</b> 50-200 lb = .020"/.51 mm, 500-2500 lb = .026"/.66 mm
<b>Bridge Resistance:</b> 350 ohms, nominal	<b>Seal Type:</b> Environmentally-sealed with neoprene sleeve, IP67
<b>Material/Finish:</b> High-alloy steel, nickel plated	<b>Cable Length:</b> 10'/3.1 m
<b>Temperature:</b> Compensated range 0°F to 150°F/-18°C to 65° C	<b>Cable Color Code:</b> Red..... + Excitation Black..... - Excitation Green..... + Signal White..... - Signal Orange.... Shield
<b>Safe Overload:</b> 150% Full scale	<b>Warranty:</b> 2-year limited warranty
<b>Rated Excitation:</b> 10V DC (15V maximum)	
<b>Combined Error:</b> 0.03% Full scale	
<b>Non-repeatability:</b> 0.01% Full scale	
<b>Insulation Resistance:</b> 5000 megohms	

## 5102 ORDER INFORMATION

Load Rating	Part #	Price
50 lb (22.7 kg)	21709	\$485.00
100 lb (45.4 kg)	21710	\$485.00
200 lb (90.7 kg)	21711	\$485.00
500 lb (226.8 kg)	21712	\$485.00
1000 lb (453.6 kg)	21713	\$505.00
2500 lb (1134.0 kg)	21714	\$505.00
5000 lb (2268.0 kg)	21715	\$585.00
10,000 lb (4535.9 kg)	21716	\$585.00

## INTERCHANGEABLE PRODUCTS

Manufacturer	Model
Revere Transducers	(see page 264) 9102

Revere Transducers, Inc.